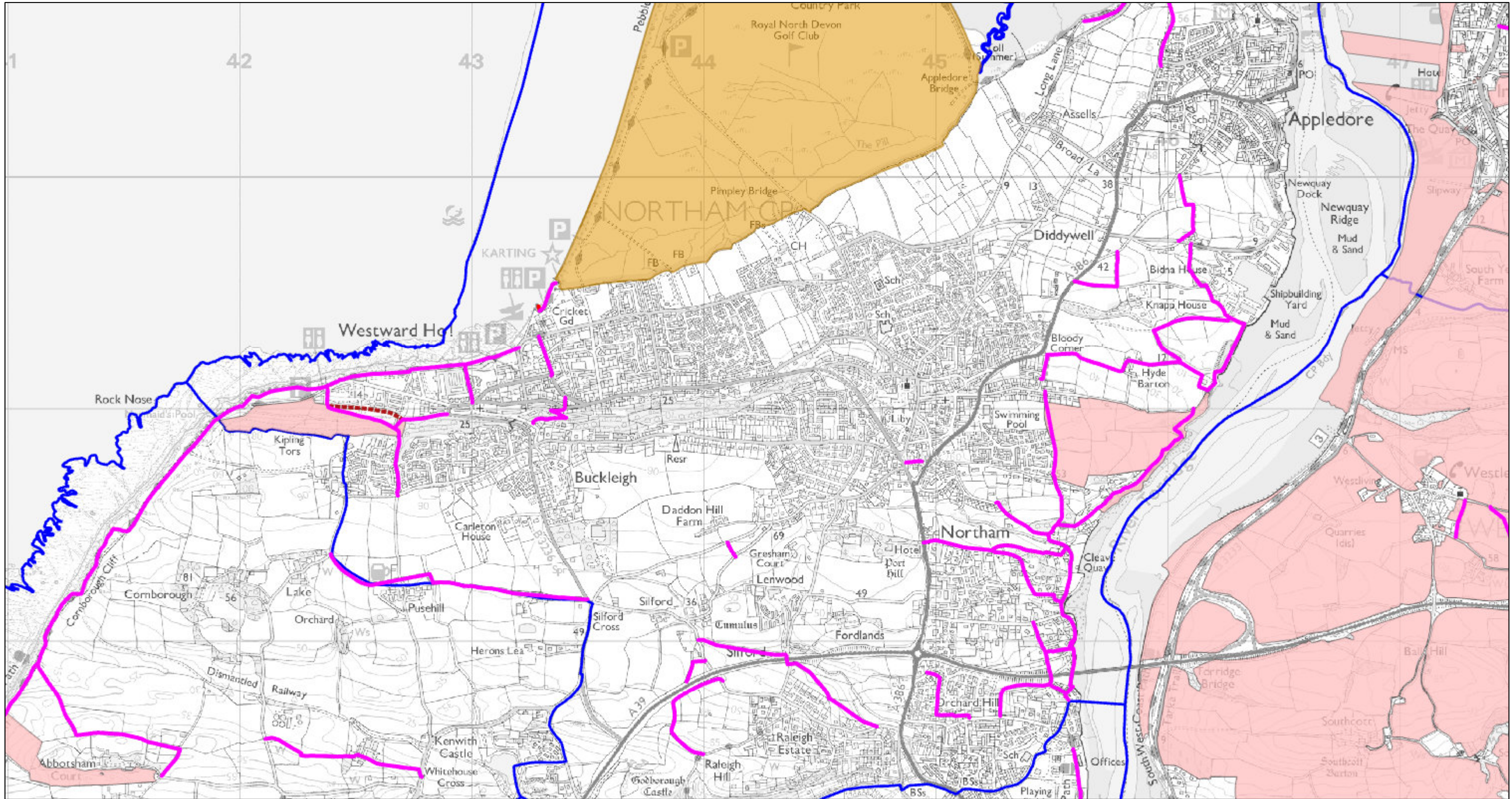


Devon County Council - Environment Data



11/3/2022, 3:07:04 PM

1:16,221

Public Rights of Way

- Bridleway
- Byway
- Footpath
- Restricted Byway

Access Land & Dartmoor Commons

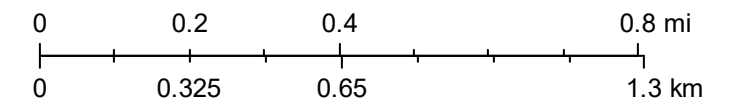
- Open Country - access on foot
- Registered Common - access on foot
- Registered Common (DNP) - access on foot and horse
- Section 15 Land - access on foot
- Section 16 Dedicated Land - access on foot

Wildlife and Countryside Act 1981 Schedule 14 Applications

- - - Wildlife and Countryside Act 1981 Schedule 14 Applications

Highways and Landowner Statements and Declarations

- Highways and Landowner Statements and Declarations
- Parish



Contains Ordnance Survey data. © Crown copyright and database rights 2021. 100019783