



**NORTHAM TOWN COUNCIL  
TOWN HALL  
WINDMILL LANE  
NORTHAM  
DEVON  
EX39 1BY**

To: All Members of the Climate Emergency Committee

Town Clerk: Mrs Jane Mills MILCM  
Telephone and Fax: 01237 474976  
E-mail [townclerk@northamtowncouncil.gov.uk](mailto:townclerk@northamtowncouncil.gov.uk)

Cc: All Northam Town Councillors

**You are hereby summoned to attend a Climate Emergency Committee Meeting on Tuesday 14<sup>th</sup> June 2022 at 6.30pm in the Council Chamber at the Town Hall.**

**The Agenda for the meeting is set out below.**

**Members of the public will be admitted at the start of the meeting.**

*M J Mills*

Mrs Jane Mills MILCM  
Town Clerk

Date of issue: 8<sup>th</sup> June 2022

The following are Members of the Climate Emergency Committee:

Councillors Hames, Newman-McKie, Mrs Hodson, Mrs McCarthy plus the Mayor, ex-officio (Cllr Laws).

All Members of the Council are entitled to attend.

Co-opted Members: Ms P Gibb, Mr T Wiersma, Ms W Lo-vel.

## AGENDA

- 1 **Election of the Chairman of the Climate Emergency Committee.**
- 2 **Election of the Vice Chairman of the Climate Emergency Committee.**
- 3 **Apologies.**
- 4 **Chairman's Announcements.**
- 5 **To agree the agenda as published.**
- 6 **To confirm and sign the minutes of the meeting held on 10<sup>th</sup> March 2022.**  
*(herewith)*
- 7 **To consider Action Points.** *(herewith)*
- 8 **Public Participation.**  
*Members of the public are permitted to make representations, answer questions and give evidence in respect of any item of business included in the agenda. Each member of the public is entitled to speak once only in respect of business itemised on the agenda and shall not speak for more than 4 minutes. The period of time which is designated for public participation in accordance with standing orders shall not exceed 20 minutes.*
- 9 **To receive an update on the installation of Solar PV cells, battery storage and a vehicle charger at Northam Hall.** *(verbal)*
- 10 **To consider plans for the webpage.** *(Cllr Hames).*
- 11 **To confirm the decision to meet virtually with representatives of the student body at Bideford College.** *(Cllr Hodson).*
- 12 **To receive an update on Footpath Guides for the Northam area** *(Cllr Hames).*
- 13 **To receive an update on the progress of the LCWIP.** *(herewith).*
- 14 **To receive an update on roof space insulation at Northam Hall.** *(verbal).*
- 15 **To consider the Draft Climate Action Plan.** *(herewith).*
- 16 **To consider the leaflet precisising the Draft Climate Action Plan.** *(herewith)*
- 17 **To consider plans for future projects, derived from the Action Plan.** *(All members).*

**Northam Town Council – Minutes of the Climate Emergency Committee Meeting held 10<sup>th</sup> February 2022 at 6.30pm**

**Present:** Cllrs Hames (Chairman), Newman-McKie, Laws, McCarthy and Hodson  
Mr T Wiersma and Ms W Lo-vel (co-opted members)

**In attendance:** Guy Langton - Deputy Town Clerk

**2202/1103 Apologies**

Apologies were received from Ms P Gibb (co-opted member) and Cllr R Tisdale (non-committee member).

**2202/1104 Chairman's announcements**

The Chairman welcomed Ms W Lo-vel to the meeting as a newly co-opted member.

The Chairman welcomed Cllr McCarthy to the meeting as a newly appointed member.

Cllr Hames reported that as the Lead Member for Climate at Torridge District Council he was closely involved with planning for the revised Local Plan as a member of the Joint Local Plan Review Committee, through which he hoped to see strengthened policies on biodiversity, climate emergency and energy efficiency at new affordable housing. Cllr Hames further reported that Torridge District Council was undertaking a carbon audit at its buildings and had engaged a company to report on ways to reduce carbon emissions from the buildings which are the most energy inefficient.

**2202/1105 Declarations of interest:**

Members were reminded that all interests should be declared prior to the item being discussed.

**2202/1106 To agree the agenda as published**

It was **resolved** to agree the agenda as published, deferring the item on working with Bideford College to the March 2022 meeting of the Committee

Proposed: Cllr Hodson, Seconded: Cllr Newman-McKie (all in favour)

**2202/1107 To confirm and sign the minutes of the meeting held on 18<sup>th</sup> November 2022**

It was **resolved** to agree the minutes as recorded.

Proposed: Cllr Hodson, Seconded: Cllr Hames (majority in favour, three abstentions, absent at the meeting)

**2202/1108 To consider Action Points**

The action points as presented were noted.

**2202/1109 Public Participation**

No members of the public attended the meeting.

**Northam Town Council – Minutes of the Climate Emergency Committee  
Meeting held 10<sup>th</sup> March 2022 at 6.30pm**

**Present:** Cllrs Hames (Chairman), Newman-McKie, Laws, McCarthy and Hodson  
Ms P Gibb and Ms W Lo-vel (co-opted members)

**In attendance:** Guy Langton - Deputy Town Clerk. One member of the public.

**2203/1209 Apologies**

Apologies were received from Mr T Wiersma (co-opted member).

**2203/1210 Chairman's announcements**

The Chairman had no announcements.

**2203/1211 Declarations of interest:**

Members were reminded that all interests should be declared prior to the item being discussed.

**2203/1212 To agree the agenda as published**

It was **resolved** to agree the agenda as published, deferring the item on working with Bideford College to the April 2022 meeting of the Committee

Proposed: Cllr McCarthy, Seconded: Cllr Hodson (all in favour)

**2203/1213 To confirm and sign the minutes of the meeting held on 10<sup>th</sup> February 2022**

It was **resolved** to agree the minutes as recorded.

Proposed: Cllr Newman-McKie, Seconded: Cllr McCarthy (majority in favour, one abstention, absent at the meeting).

**2203/1214 To consider Action Points**

Regarding EV charge point locations, Cllr Hames reported that Torridge District Council were looking at further EV charge point locations across the area, but this was in the early stages.

The remainder of the action points were noted as presented

**2203/1215 Public Participation**

Louise Wainwright of Bigbury Net Zero addressed the Committee on work done in her local area, sources of information and assistance which could aid the Committee in drafting of the Council's Climate action Plan. She also encouraged community engagement and offered suggestions on how this could be achieved.

**2203/1216 To consider amendments to the Draft Climate Action Plan.**

The Committee considered the revised draft shared by Cllr Hames, considering the layout and content to be improved. A shorter version was still needed, which Cllr Newman-McKie offered to draft, this could be shared at the May Fair and with the wider community. Maps provided by Torridge District Council's Coastal Change Management Area (CCMA) Technical Evidence should be included (with citation).

It was **resolved** to approve the amendments thus far included, subject to additions as noted, and recommend its adoption to Full Council at its March 2022 meeting.

Proposed: Cllr McCarthy, Seconded Cllr Hodson (all in favour).

## Minutes

Page 282

**Action point: Cllr Newman-McKie to draft a shortened version of the Climate Action Plan for consideration at the April meeting.**

**Action Point: Cllr Hames to complete the editing of the Climate Action plan to include the agreed additions.**

### 2203/1217 To consider plans and future projects.

It was **resolved** to suspend standing orders to hear again from Louise Wainwright.

Proposed Cllr Laws, Seconded Cllr Hodson (all in favour).

The Committee heard that publicly available websites that could provide meta-data of the civil parish's overall carbon footprint (from Exeter University) and a personal carbon footprint tool available from Carbon Savvy would also prove helpful in drafting future action plans.

It was **resolved** to re-enter standing orders.

Proposed: Cllr Hames, Seconded: Cllr Hodson (all in favour).

**Action point: Deputy Town Clerk to share the web addresses with committee members.**

The Committee discussed installation of Council buildings, prioritising Northam Hall, ways to promote car sharing, and ways of making the Council's planting schemes more sustainable.

It was **resolved** to recommend to Full Council that the Council only use peat-free compost in its planting and sourcing of plants.

Proposed: Cllr Laws, Seconded Cllr McCarthy (all in favour)

**Action point: Deputy Town Clerk to work with colleagues to coordinate future planting plans to minimise the environmental impact.**

### 2203/1218 To confirm the decision to meet virtually with representatives of the student body at Bideford College.

It had been agreed to defer the consideration of this item to the next meeting at minute 2203/1212.

*Cllr Newman-McKie left at this juncture.*

### 2203/1219 To receive an update on the installation of Solar PV cells, battery storage and a vehicle charger at Northam Hall.

The Deputy Town Clerk reported that the contractor had been instructed and the deposit was to be paid that week. The contractor planned to undertake the work in June 2022.

Pre-application advice was awaited from Torridge District Council.

- 2203/1220 To receive an update on Footpath Guides for the Northam area.**  
Cllr Laws reported that he had received a footpath map and had plans to start drafting guided routes with the assistance of the Westward Ho! resident.

**Minutes**  
**Page 283**

- 2230/1221 To consider plans for insulating Northam Hall.**  
It was **resolved** to seek updates from the organisations consulted in the summer of 2021.  
Proposed: Cllr Hodson, Seconded Cllr Hames (all in favour).  
**Action point: Deputy Town Clerk to approach organisations.**

There being no further business the meeting finished at 8:15pm.

Signed..... Dated.....

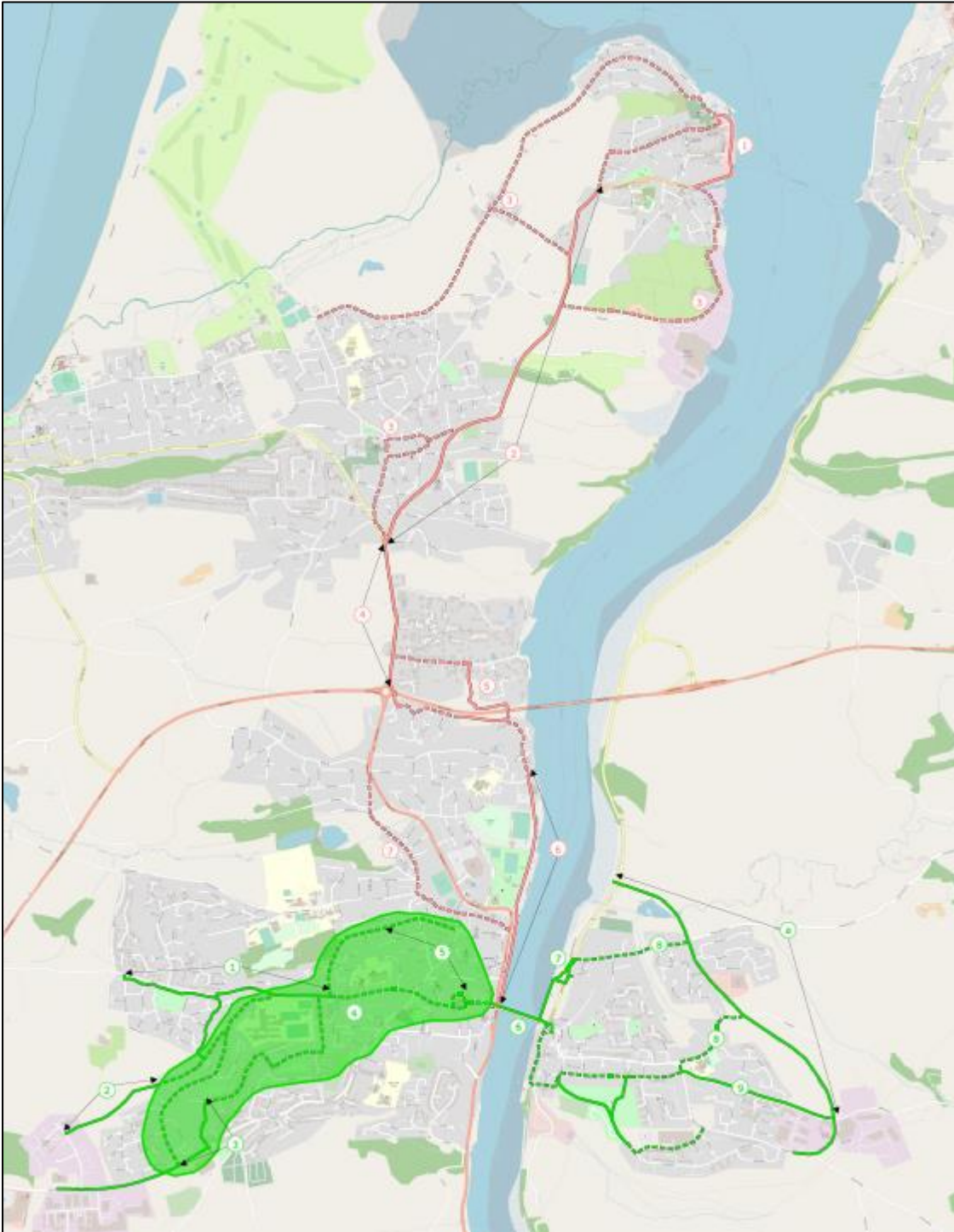
DRAFT

## Action points for June 2022

RAG rating:	Green Complete	Amber In progress	Red To start
1. Drafting a Northam Town area Footpath Guide:	Cllr Laws to meet local resident in Westward Ho! and research local walks to start guide.		On the agenda
2. EV chargers	Cllr Hames to write to TDC regarding the installation of EV charge points at Wilkies Field car park in Westward Ho!		To be updated at the meeting. ongoing
3. Working with Bideford College on climate-related matters. Cllr Hodson to liaise with the Cadet to establish suitable dates for a Zoom meeting.	Decision to be included on the April 2022 agenda for ratification.		On the agenda and ongoing.
4. Life on the Verge	Deputy Town Clerk to advise relevant Devon CC officers (NHO and Ecologists) of the Council's planned verge maintenance activities.		NHO has agreed the Council's plans. The Maintenance team has been informed of the plans. Detailed planting/maintenance plans to be discussed in July 2022.
	Council maintenance staff to work according to the plans, including any training or advice necessary.		Ongoing
5. Solar PV at Northam Hall	Deputy Town Clerk to instruct supplier.		The installation has been completed (one battery to follow, to be installed in July 2022).  The energy provider informed, a new meter will be installed on the 30 <sup>th</sup> June, providing a feed in tariff of 7.5p/kWh once all work completed (so from August 2022).

6. Draft Climate Action Plan	Amendments made. <hr/> Cllr Newman-McKie offered to draft a summary of the Plan	On the agenda. <hr/> On the agenda.
7. Rain water capture at Northam Hall	Deputy Town Clerk to order the required equipment and plan the installation with the maintenance team.	Installation complete and water being collected. Connector system between the barrels to be fitted to maximise water capture.
8. Deputy Town Clerk to work with colleagues to coordinate future planting plans to minimise the environmental impact	Planting for 2022 was been planned on a red, white and blue theme in recognition of Her Majesty The Queen's Platinum Jubilee in June 2022.	Ongoing.
9. Insulation at Northam Hall. Deputy Town Clerk to approach organisations for up to date quotes.	Organisations contacted.	Ongoing and on agenda.





Introduction to the LCWIP Process: Stages 1 and 2 –  
2mins 47 secs  
<https://youtu.be/N23QFX7RjTo>

Introduction to the LCWIP Process: Stages 3 & 4  
(Bideford and Northam) – 7mins 40 secs  
[https://youtu.be/-0z6ntAv\\_a0](https://youtu.be/-0z6ntAv_a0)

Introduction to the LCWIP Process: Stages 3 & 4  
(Barnstaple) – 7mins 40 secs  
<https://youtu.be/ErrOoHS-voQ>

**Proposals for stakeholders**

**Routes**

- Appledore to Bideford
- West Bideford to East-the-Water

**Key**

- Appledore
- Off
- Quiet

© OpenStreetMap contributors  
Contains OS data © Crown copyright and  
database right 2022

**Northam Town Council**  
Draft Climate Emergency Action Plan



## **Contents**

<b>1. Introduction</b>	<b>2</b>
<b>2. Aims and Vision</b>	<b>4</b>
<b>3. Key Information About Northam Parish</b>	<b>7</b>
<b>4. Action to Reduce Emissions</b>	<b>12</b>
<b>5. Engaging with the Community</b>	<b>15</b>
<b>6. Our Actions So Far</b>	<b>16</b>
<b>Appendix 1 Carbon Audit</b>	<b>18</b>
<b>Appendix 2 Climate Survey</b>	<b>24</b>
<b>Appendix 3 Resources and Sources</b>	<b>26</b>

# 1.Introduction

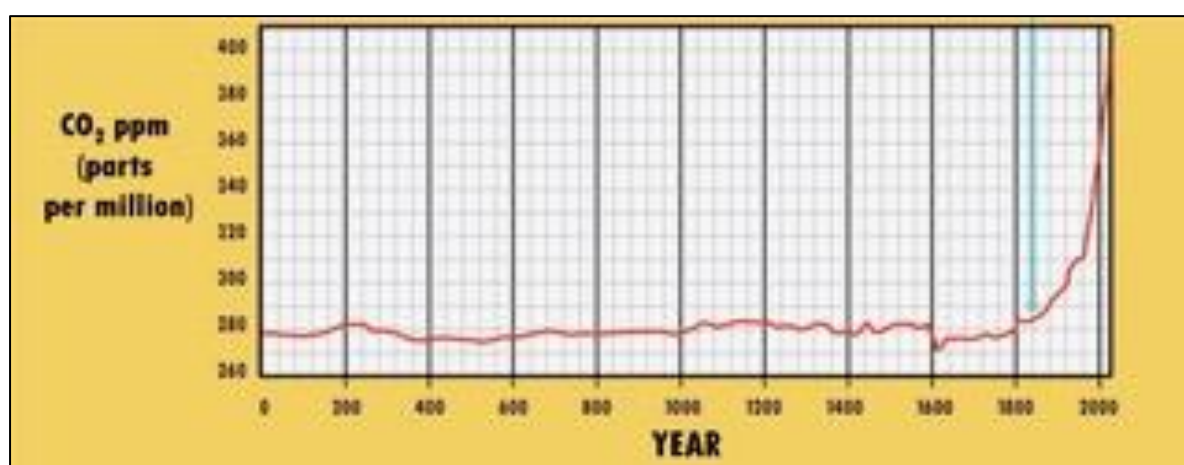
Our planet's climate is changing and warming is accelerating. The latest reports of the Intergovernmental Panel on Climate Change (IPCC) have warned that we have 10 years to limit climate change to avoid a catastrophe. The most recent report published in 2022 has warned that climate breakdown is accelerating rapidly and that some of the impacts will be more severe than predicted with only a narrow chance of avoiding its effects if average temperatures increase to 1.5 degrees above pre-industrial levels... These effects include increased risks to life and health, to livelihoods, food security, water supplies and economic growth.

Limiting global warming to 1.5°C requires 'rapid and far-reaching' transitions in land, energy, industry, buildings, transport and cities. The IPCC reports emphasise that with ambitious action from national and sub-national authorities, civil society, business and local communities, it may still be possible to limit warming.

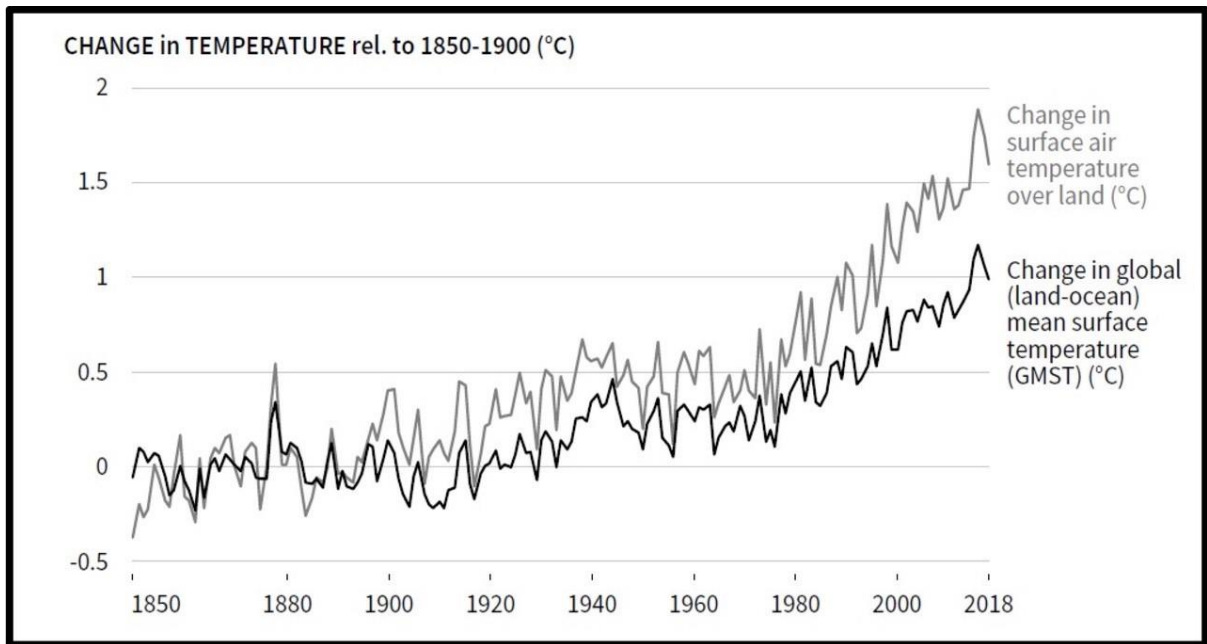
In addition, a recent Intergovernmental Panel for Biodiversity and Ecosystem Services (IPBES) 2 stated that around 25% of the world's species are now at threat of extinction due to habitat loss and the effects of climate change. Climate change has severe direct and indirect impacts on biodiversity and is predicted to be a significant driver of future biodiversity loss. At the same time, the loss of biodiversity magnifies the adverse effects of climate change. Biodiversity impacts linked to climate change include habitat degradation/destruction and the introduction of invasive alien species to ecosystems. Managing and protecting biodiversity will mitigate the negative impacts of climate change and help humans adapt to it; policies and actions aiming at limiting the effects of climate change will contribute to the protection of biodiversity.

Humans have already caused irreversible climate change, the impacts of which are being felt all around the world - for example, melting glaciers causing sea level rise, drought conditions or severe flooding (both affecting food crops and driving emigration to the cities and beyond), reduction in water supplies and loss of habitats for wildlife leading to species extinction.

Global temperatures have already increased by 1°C from pre-industrial levels. Atmospheric CO<sub>2</sub> levels are above 400 parts per million (ppm). This far exceeds the 350ppm deemed to be a safe level for humanity. The latest predictions by the Met Office for the UK are an increased chance of warmer, wetter winters and of hotter, drier summers, along with an increase in the frequency and intensity of extremes'.



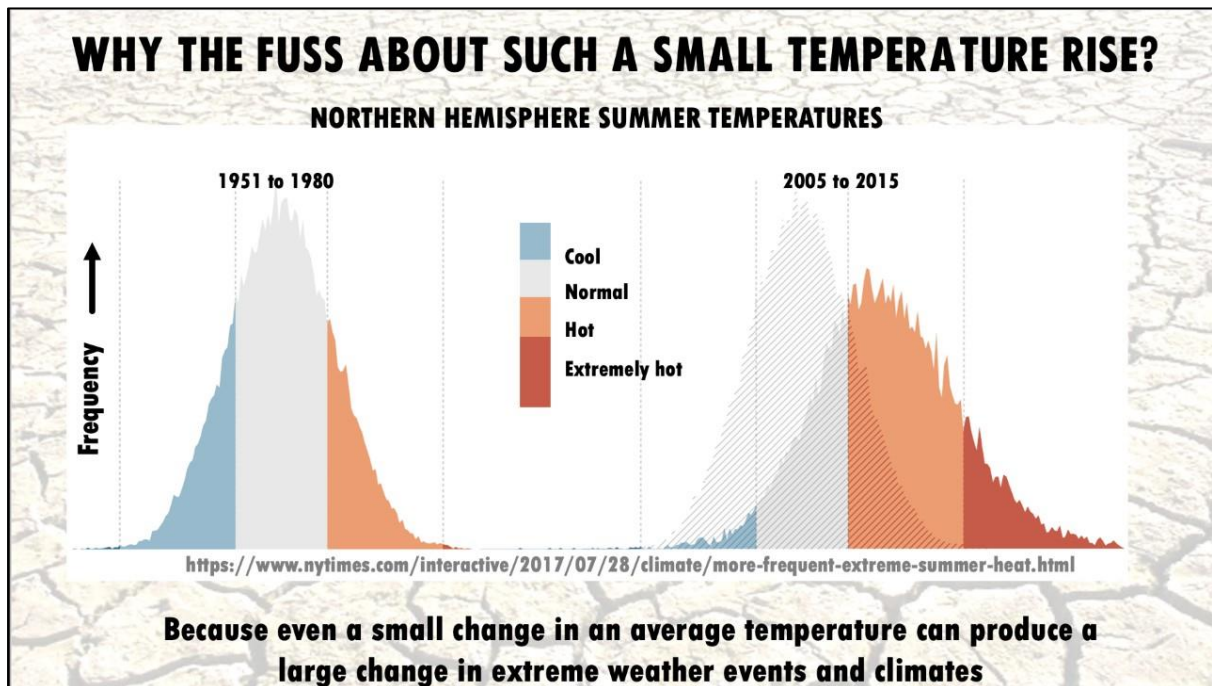
Source: <https://nas-sites.org/americasclimatechoices/more-resources-on-climate-change/climate-change-lines-of-evidence-booklet/evidence-impacts-and-choices-figure-gallery/figure-6/>



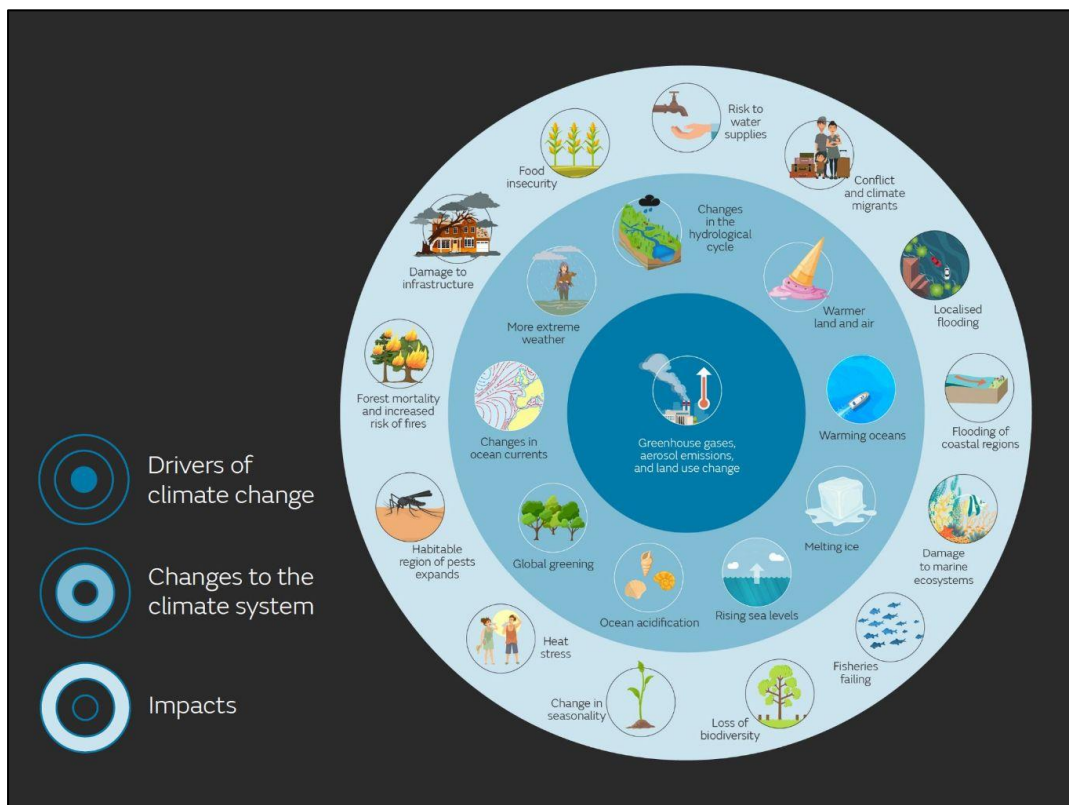
Source: IPCC Special report Climate change and land use (2019) (<https://www.ipcc.ch/srccl/>)

For those who say that climate change is not happening, we need to look at the evidence provided by the reports of the International Panel on Climate Change, the Meteorological Office, the Parliamentary Committee on Climate Change and other official bodies. (e.g. ref Report of IPCC, April 2022). Globally, 2010-2019 was the warmest decade since records began in 1850 and each decade since 1980 has been warmer than the preceding one. 2019 was the second warmest year on record.

All governments (national, regional and local) have a duty to implement policies which limit the impact of climate and environmental breakdown. Towns, cities and local authorities at all tiers are uniquely positioned to lead the world in reducing carbon emissions; Bold climate action can deliver economic benefits in terms of new jobs, economic savings and market opportunities as well as improved personal, social and environmental well-being for people, locally and worldwide.



Source: <https://www.nytimes.com/interactive/2021/climate/extreme-summer-heat.html>



Source: Met Office UK

## 2. Aims and Vision

Northam Town Council declared a Climate Emergency in August 2019. To support this declaration the Council committed to adopting an action plan by the end of January 2020 detailing how the it plans to secure net zero carbon emissions by 2030 across its buildings, assets and operations. The Plan would also detail how the Council could support the wider community in significantly reducing its carbon footprint by the same date. A Climate Emergency Committee was set up consisting of five Councillors and four co-opted members of the public and tasked with preparing and implementing a Climate Emergency Action Plan.

The Council aims to reduce carbon emissions from its buildings and operations through reduction in its waste, transport and energy use, through influencing planning decisions and policies, through the Council's procurement of goods and services and by looking at investing in environmentally sustainable funds. The Council also plans measures to increase biodiversity and to reduce water usage. However, If the Council succeeds but the rest of Northam parish fails to meet these targets then there will be failure overall. The Council's own emissions are a tiny proportion of that area's total emissions, so it is vitally important to work with the community to achieve our carbon net zero target.

Our initial proposals of action to reduce emissions are set out in Section 4 of this Action Plan and proposed actions to engage the community in achieving our target are set out in Chapter 5.

Our vision is that by coming together to reduce our carbon emissions the lives of local people can be greatly enriched. Imagine a future of clean air with fewer cars on the roads and more people cycling and walking along dedicated tracks, children playing safely outside, more birdsong, bees, butterflies and other wildlife, thriving local, self-sufficient economies and energy-efficient homes and businesses powered by renewable energy. It would be a society of connection, collaboration and community, with a sense of collective purpose, informed by the recognition that we should live in harmony with the natural environment.

## THE INTERIM DEVON CARBON PLAN

# IN 8 POINTS



### Fossil fuels no longer an energy source.

- We use more renewable energy
- Communities are active in energy issues
- We walk, cycle & use electric vehicles



### Energy consumption is minimal.

- We drive less, we are active & healthy
- Services are local, reducing travel needs
- All buildings are more efficient



### Community action for a net-zero Devon.

- We think innovatively
- Communities share ideas of net-zero
- Citizens are at the centre of change



### Carbon captured from fuels burnt.

- Only used for unavoidable greenhouse gas emissions
- Devon pilots carbon capture & storage projects e.g. catching smoke from industrial chimneys

## THE INTERIM DEVON CARBON PLAN

# IN 8 POINTS



### Escaping greenhouse gas emissions are minimised.

- Reduce escaping gases from sewage works, landfill & electrical equipment



### Develop a resilient local economy.

- A circular, just, regenerative economy
- Reskill workers e.g. in renewable energy
- We spend money locally



### Resources are used more circularly.

- We consume fewer materials
- Reduce household & commercial waste
- We reuse, repair & recycle more



### Maximise natural carbon storage.

- Adapt to climate impacts e.g. flood controls
- Trees planted & habitats restored
- We enjoy healthy, locally sourced foods



### 3. Key Information About Northam Parish



The parish of Northam includes Northam, Appledore, and Westward Ho!. Northam is mainly a residential area with an historic core of narrow streets, shops and church. Appledore is separated by green fields from Northam and lies at the tip of a peninsula at the mouth of the Torridge estuary. The village has a strong visual identity which is formed by old houses on narrow streets and passageways called ‘drangs’. It has a rich fishing and ship building tradition. Westward Ho! was developed by the Victorians as a holiday resort and as well as accommodating extensive residential development still includes the holiday function in modified form.

The total population of the parish in 2021 was 12,425 .According to the Torridge Ward Profiles compiled in 2020 the population consisted of the following age groups:

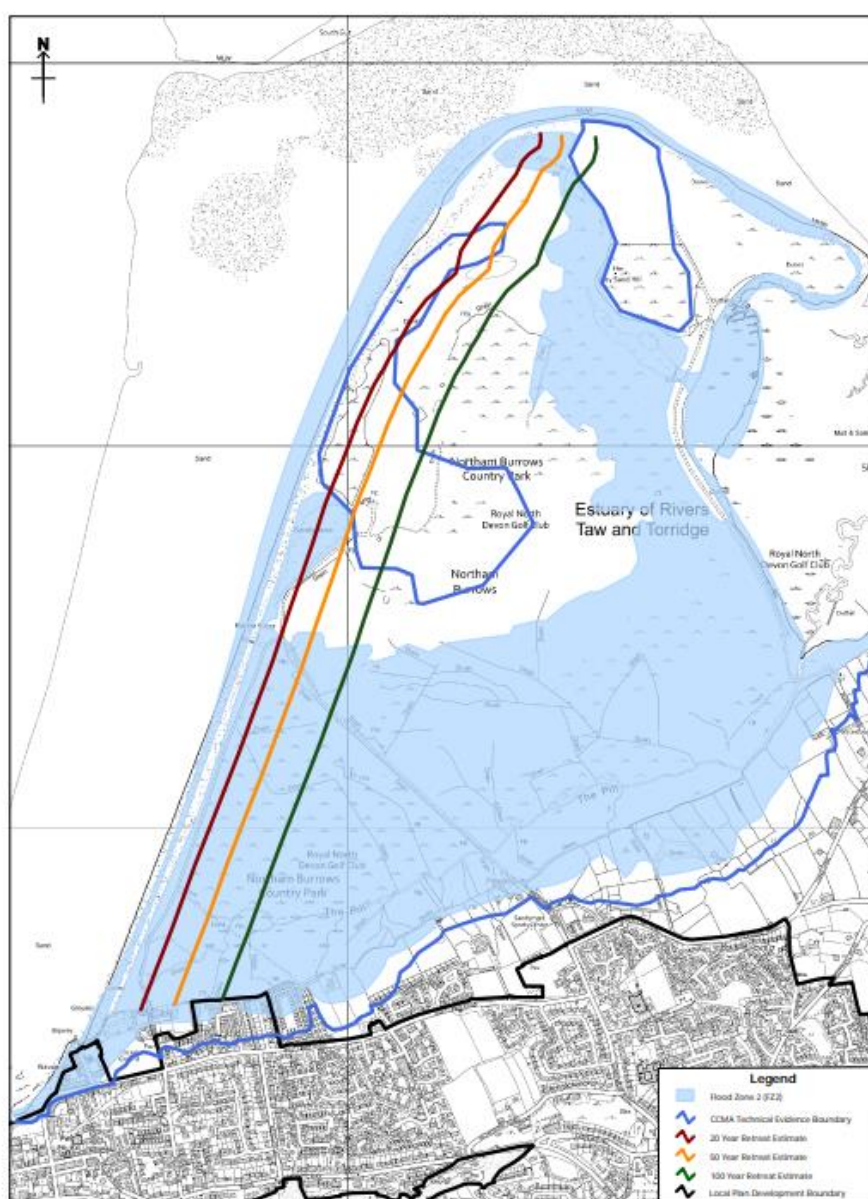
<b>Population Age</b>	<b>0-4</b>	<b>5-15</b>	<b>16-24</b>	<b>25-44</b>	<b>45-64</b>	<b>65-74</b>	<b>75-84</b>	<b>85+</b>
Appledore ward	4.5%	11.1%	6.1%	19.1%	29.7%	16.2%	10.2%	3.1%
Northam ward	3.4%	8.3%	5.5%	15.6%	28.0%	19.6%	12.8%	6.8%
Westward Ho! ward	3.5%	6.7%	6.8%	17.0%	27.7%	21.2%	12.6%	4.6%
Torridge District	4.7%	11.6%	7.9%	19.0%	29.7%	15.5%	8.4%	3.3%

These figures show there is a significant element of retired people in the parish (more than the Torridge average). Most of those who are employed or self-employed mainly work outside the area, except those who work locally in the shops, cafes and tourist facilities. Tourism is an important element in the local economy and another important source of employment is the large indoor shipyard at Appledore, owned by Harland and Wolff.. (See the Torridge Ward Profile 2020 for detailed information about the populations of Northam, Westward Ho! and Appledore.)

Apart from residential areas the parish is notable for the long sandy beach at Westward Ho! which is backed by a long and high bank of pebbles known as the Pebble Ridge. Behind the Ridge lies Northam Burrows which is a grazing common and also a Site of Special Scientific Interest and part of the UNESCO North Devon Biosphere. The Burrows leads to the Torridge Estuary which is also an SSSI.

The main specific climate challenge to the area is future flooding from rising sea levels which will affect Northam Burrows and residential properties at Westward Ho!, exacerbated by the gradual angling in of the Pebble Ridge towards Westward Ho! (as explained in the Pethick Report on the Geomorphology and Management of the Taw and Torridge Estuaries, published in 2007). Smaller coastal strips at Appledore and on the estuary at Northam would also be affected by sea level rise. The Environment Agency's maps reproduced below (published in 2021) show possible flooding in the area over the next fifty and 100 years.. It should be emphasised that the maps are intended to show a 'worst case' scenario and don't necessarily indicate that the land is going to flood or that properties are at immediate risk. Rather it is prudent to plan for the potential of this outcome by investing in future flood defence

improvements and by directing future developments to areas with lower risk of flooding.



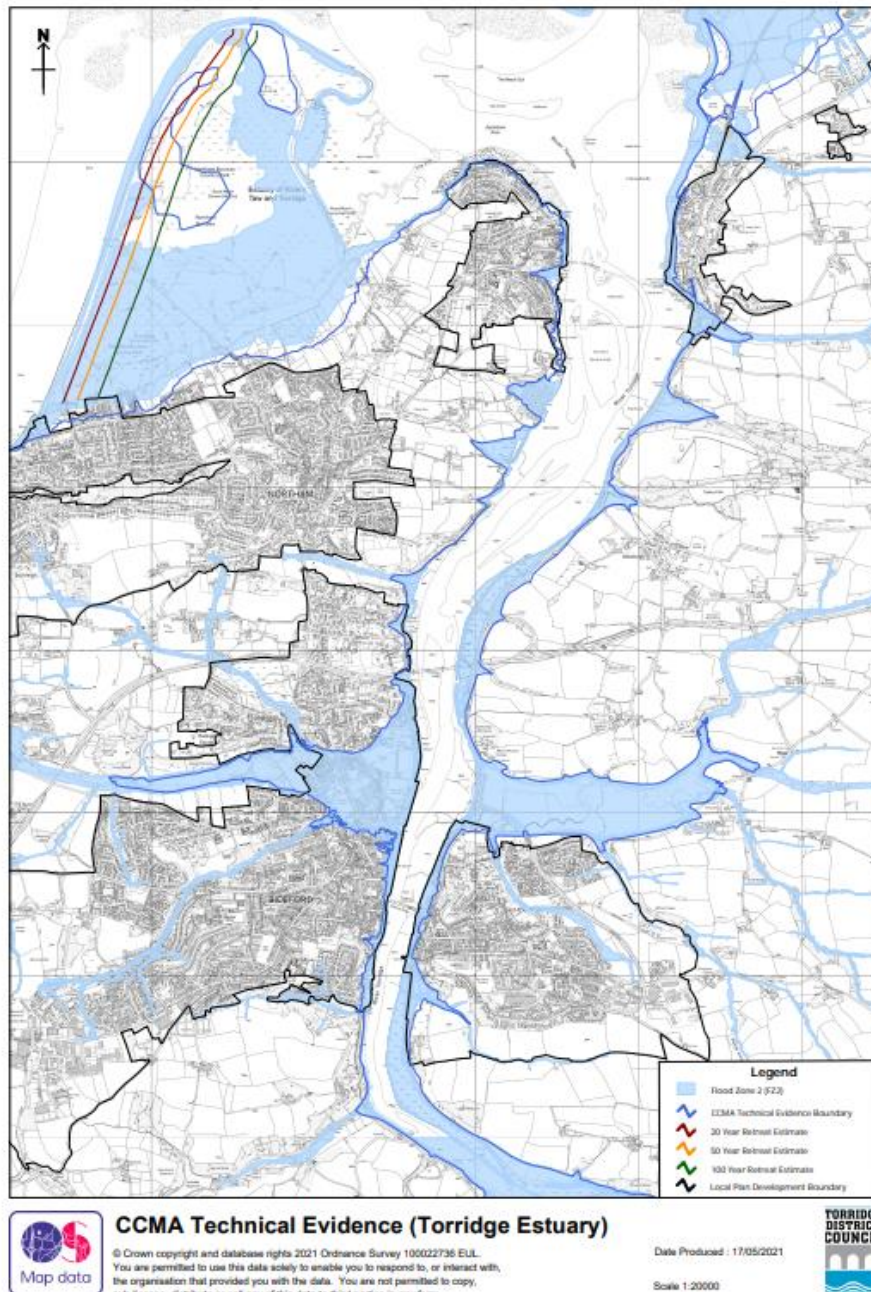
**CCMA Technical Evidence (Westward Ho! and Northam Burrows)**

© Crown copyright and database rights 2021 Ordnance Survey 100022736 EUL. You are permitted to use this data solely to enable you to respond to, or interact with, the organisation that provided you with the data. You are not permitted to copy, sub-license, distribute or sell any of this data to third parties in any form.

Date Produced : 17/05/2021

Scale 1:8500





Another process likely to impact on the parish is an increase in average temperatures due to global heating which will lead to more frequent drought conditions with serious effect on the quality of grazing on Northam Burrows and other areas in the parish and on food supplies.

## **4. Action to Reduce Emissions**

The following is a list of actions which the Council will pursue in order to achieve its net zero target by 2030, highlighting specific projects designed to have the most impact.

### **Waste**

#### **Northam Town Council**

Prioritise re-use of materials and repair of equipment used in the Council office and workshop and by the maintenance staff in carrying out their duties; provide re-usable water bottles to staff; minimise paper use; re-use paper by printing on blank sides; increase recycling (e.g. ink cartridges), provide composting facilities for maintenance staff; reduce food waste in office and at functions, adopt a policy of no single plastic use in the Council offices and at Council functions.

#### **Parish**

Encourage increased recycling rate in Northam. Emphasise on the Council's website the priorities of re-use and repair and provide information about local repair services. Encourage the reduction of single use plastics and polystyrene surf boards. Carry out a food waste reduction campaign (e.g. in schools); investigate a community composting scheme; set up recycling for hard to recycle materials; place recycling bins in NTC open spaces.

### **Transport**

#### **Northam Town Council**

Encourage staff and councillors to walk, cycle, use public transport and car share... Change to electric or other alternative fuel vehicles for maintenance staff. Encourage reduction in staff/councillor travel and aim to reduce guest travel distance to NTC functions e.g. Mayor's dinner; install bike racks in Westward Ho!, Appledore, Northam at NTC parks

#### **Parish**

Encourage walking, biking, bus use in parish, circulate a local footpath guide book, actively push for Kenwith Valley and other local cycle routes and investigate funding; promote car sharing, alternative transport to work places, investigate possible sites for EV charging points, promote alternatives to cars at Northam May Fair.

### **Energy**

#### **Northam Town Council**

Install a solar/battery storage system on Northam Hall roof to provide power for the building, for EV vehicles and for battery powered equipment and introduce energy saving measures in the building (e.g. thermostats, roof and wall insulation) Replace the gas heating with heat pump system; fit LED bulbs in the Town Hall and other NTC buildings; paint walls white for reflected light, introduce a no artificial light policy in NTC buildings when there is strong sunlight; turn off decorative lighting overnight e.g. Xmas lights, use sava plugs; work with Torridge to introduce more efficient, low carbon heating at the Town Hall and in the Council chamber repair or replace draughty windows, lower ceiling and insulate walls; provide instant hot water units for beverages; a low energy computer system, turn off computers at night; change to a renewable energy electricity tariff; install smart meters in NTC buildings.

## **Parish**

Encourage community renewable energy schemes, working with S.W. Community Energy; work with local schools including contributing funding for carbon reduction schemes, publish information on NTC website about Government and local authority insulation schemes and heating subsidies, hold energy reduction exhibition at libraries, halls, schools; negotiate bulk discounts on insulation and sustainable energy systems for households.

## **Planning**

### **Northam Town Council**

New-builds by Town Council to be carbon neutral (Northam Hall extension, the Pavilion at Westward Ho! Park)

## **Parish**

Engage with Torridge District Council to ensure that obligations under the National Planning Policy Framework (NPPF) to reduce carbon emissions are being met in the Local Plan (Para 2.7 of the NPPF states that the purpose of planning is 'sustainable development'. Chapter 14, para 148 'contribute to radical reductions in greenhouse gas emissions', para 149 'Plans should take a proactive approach to mitigating and adapting...in line with the objectives of the Climate Change Act.'). Call for renewable energy provisions and energy efficient buildings as part of planning; push for tree planting for development sites and other biodiversity measures, oppose destruction of wildlife habitats, identify habitats and corridors in NTC's Neighbourhood Plan; water-saving to be incorporated in planning applications. Measures in new builds to cope with future intense rainfall and monsoon-like conditions, to include permeable paving and any play areas, rills around each house, green roofs to absorb excess water, large basin/sinks, sustainable drainage systems (SUDs) should be incorporated (and would provide wildlife habitats as well).

## **Food**

### **Northam Town Council**

Provide non-meat options at Council functions; any waste to go to food bank or recycled; provide alternatives to meat and fish at Council functions, promote healthy eating, create more allotment plots, source locally-produced food.

## **Parish**

Promote local low carbon emission, organic food production and local food markets.

## **Biodiversity**

### **Northam Town Council**

On Council land plant more trees, sow more wildflowers, minimise grass cutting, and seek environmentally-friendly alternatives to chemical sprays including cordless power equipment. Engage with a community gardener to advise on creating and maintaining areas of biodiversity in the Parish.

## **Parish**

Provide grants for tree planting; leave inner areas of wide verges uncut to encourage re-wilding and sow wildflower seeds at selected sites..

## **Water**

### **Northam Town Council**

Install water saving taps and cisterns, water butts; mulch flower beds, plant drought- tolerant shrubs in beds, hanging baskets and boats.

### **Parish**

On website and in newsletters encourage reduction in water use, water saving.

## **Procurement**

Prioritise re-use and repair of materials and equipment and adopt a policy of purchasing environmentally sustainable products and services, favouring local suppliers.

## **Investments**

Move Council investments to green accounts and disengage from funds invested in fossil fuels.

## **5. Engaging with the Community**

In the wider community, the Council aims to work with local people so that the parish as a whole can achieve significant reductions in carbon emissions and facilitate a shift to a more integrated and environmentally-aware way of living.

The Council could engage with the community through such participatory mechanisms as citizen's assemblies and open space events and should encourage initiatives which build community co-operation and resilience e.g. social enterprises, development of the local economy, local energy schemes, working with local schools to develop projects.

Northam Town Council also recognises that in the light of damaging carbon levels which have already occurred and will occur there is a need to develop with the community a climate emergency plan to enable greater resilience in the face of more extreme weather conditions. For example, it is predicted that the UK will experience periods of much more intense rainfall and monsoon-like conditions leading to flooding. More severe storm conditions and also periods of drought will also be associated with climate change.

Given the above, the following strategy is proposed:

1. Publish a carbon audit of Northam.
2. Hold public meetings in the Parish as and when possible to set out the aims of the Climate Emergency Plan, the vision and the proposed means of achieving them within the Council and in the community, and to take on board the public's responses. Hand out/deliver survey forms in the meantime to gather feedback regarding possible actions
3. Engage with all areas of the community and as a result set up an advisory, participatory and all-embracing group to work with the Council to achieve the target of net zero carbon in the community by 2030.
4. Key elements of the work of such a group would be agreement on the sort of low carbon world which is being aimed for by 2030, generation of ideas for action and ways of achieving objectives, provision of information and communication systems, mapping of networks and organizations and assembly of data regarding resources available in the community.

- Information on available resources (human and otherwise) will be vital to build up community resilience in the face of likely climate-related events such as flooding, storm damage and drought. Such resilience could be promoted and harnessed through the creation of a Northam Emergency Plan involving the establishment of a community network of volunteers.

## 6. Our Actions So Far

Since declaring a Climate Emergency Northam Town Council has fulfilled the following projects:

### Data Collection

Engaged 361 Energy to do a carbon audit of the Council's property and activities.

### Waste

Reduced paper waste in Council offices

Committed to a policy of no single plastic use in Council offices and at Council functions

Supported a local anti-polystyrene surf board campaign

Arranged to participate in an ink cartridge recycle scheme for charity.

Provided recycling containers at play areas in Lords Meadow (pictured above with bike racks), Anchor Park and Westward Ho! Park



### Transport

Installed bike racks at Lords Meadow, Anchor Park, Westward Ho! Park, Churchfields Car Park and Town Hall.

Contributed financially to and participated in the preparation of Local Cycle and Walking Infrastructure Plan covering Northam, Bideford and Barnstaple.

Identified and promoted local cycle and walking routes

### Energy

Committed to a solar energy/battery installation at Northam Hall to provide energy for the Hall and for future heat pump system, EV vehicles and battery powered equipment.

### Planning

Incorporated policies in the draft Northam Neighbourhood Plan to combat and adapt to Climate Change and to conserve and increase biodiversity

### Biodiversity

Committed to a scheme to leave selected verges in the parish partly unmown to encourage re-wilding.

Committed to sow wild flower meadows on selected verges in the parish.

Planted trees and insect friendly shrubs at Anchor Park, Westward Ho! Park, Blackies and committed to an insect friendly planting scheme outside the Town Hall

Committed to a policy to minimise and eventually dispense with chemical weed control

### **Water**

Committed to installing a rain water capture system at Northam Hall

Installed water fountain at Churchfields Car Park, Appledore to encourage reduction of plastic bottled water use.

### **Procurement**

Committed to a revised environment policy stating that the Council will purchase sustainable products and services whenever possible.

### **Engaging with the Community**

The Council participated in a Climate Day at Kingsley School and mounted a Climate Emergency display at Northam Library.

A Climate Survey was sent to all residents of Northam. See Appendix 2 Climate Survey and Responses

(NB Full community engagement was prevented by the Covid epidemic after March 2021.)



## Appendix 1: Carbon Audit

### Northam Parish Council's Carbon Emissions

To achieve the Council's zero carbon target by 2030 it was necessary to first measure the carbon emissions of the Council in its buildings. In 2020 the Council commissioned local energy advisory group 361 Energy to do a carbon audit. The following is its report and recommendations:

**Summary of Energy Audit.** 30<sup>th</sup> September 2020 **Audited by:** Matt Whitehead. CEnv.

**Scope of survey:** Northam hall (Fore Street), Northam town hall (Windmill Lane), vehicles.

**Objective:** Identify ways in which carbon emissions can be reduced at Northam Parish Council to support the Climate Emergency Action Plan.

### Context

For the UK to achieve net zero carbon emissions by 2050, there will need to be a wholesale move away from fossil fuels (e.g. gas, petrol, diesel). The political and scientific consensus is that fossil fuels should be substituted with grid supplied electricity (assuming that targets to fully decarbonise grid supply are achieved), locally produced electricity through renewables, hydrogen, and biofuels where appropriately sourced.

Emissions of CO<sub>2</sub> are currently greater per kWh of electricity consumed compared to a kWh of gas. However, this gap is narrowing each year and the convergence point where gas consumption emits more CO<sub>2</sub> per unit than electricity is expected to be reached shortly after 2025.

This is recognised and supported by central Government policy which is in place to start making a shift from fossil fuels to electricity. For example, gas heating systems will be banned in new houses from 2025. To address vehicles, sales of new petrol and diesel cars and vans will be banned from 2035.

### Reducing Carbon emissions at Northam Parish Council

Energy 361 were commissioned to carry out building and vehicle energy audits to recommend ways to reduce carbon emissions. In working towards a net zero carbon goal, Northam Parish Council should consider the degree of control that the Council has over its emissions to most effectively respond to this challenge. We identified the following categories during the survey:

Directly controlled by Northam Parish Council

- Heating and electricity at Northam hall. Systems are owned and maintained by Northam Parish Council (NPC). However, it is slightly more complicated as community groups use the building and have a significant impact on energy consumption.



- Petrol and diesel for maintenance vehicles. Vehicles are owned, operated, and maintained by NPC.
- Petrol for machinery (grass cutting, etc) also owned, operated, and maintained by NPC.



#### Indirect control

- Heating at Northam town hall. As this owned by Torridge DC but leased to NPC, there is a split responsibility. For example, procuring a boiler for the building is the responsibility of Torridge DC, but temperature and time controls are under the direct control of NPC.

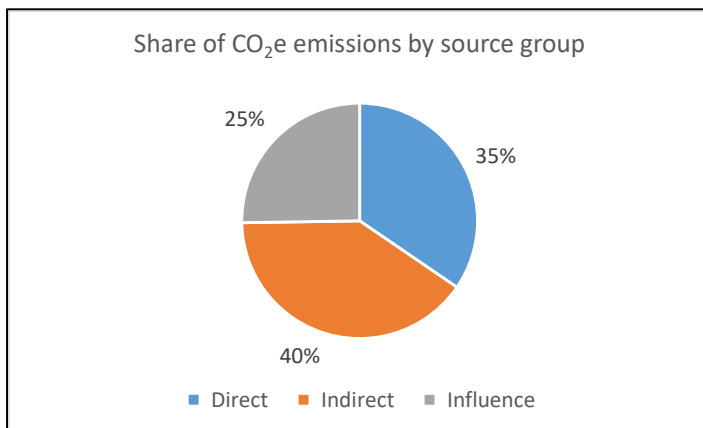


#### Influence

- Petrol and diesel cars used for business (other than maintenance vehicles). These are claimed on expenses. Being private cars, NPC cannot control which cars are driven on business but can have an influencing role. We know of no company cars
- Commuting. NPC can only influence the travel choices of staff and contractors.

### Carbon footprint

An estimate has been made of the carbon footprint based on the available data published by NPC within their Climate Emergency Action Plan Version 6. CO<sub>2</sub>e is defined as carbon dioxide equivalent and takes into account several greenhouse gases to produce a single unit. This is the standard for reporting of carbon emissions.



Emissions that are under the council's direct control are broken down as follows.

Category	kgCO <sub>2</sub> e	% Contribution
Direct that is buildings	1,503	17%
Direct that is transport	4,715	53%
Direct that is machinery	2,703	30%
<b>Total emissions under direct control</b>	<b>8,921</b>	<b>100%</b>

Machinery in this context is defined as grass and hedge cutting vehicles and equipment.

An additional 10,000 kgCO<sub>2</sub>e is associated with energy used in the Northam town hall where the council can exert some but not full control. This level of influence should be borne in mind when prioritising actions for implementation.

It has not been possible to account for emissions arising from commuting to work as the data is not available. This carbon footprint does not also take account of water use and wastewater or 'scope 3' emissions such as procurement and waste.

### Summary of recommendations

- Full details of each recommendation are contained in the accompanying sheets.
- CO<sub>2</sub>e savings are based on DEFRA 2020 carbon emission factors.
- tCO<sub>2</sub>e saved over lifetime of the measure is used for comparing competing carbon reduction options. The higher the number, the more attractive the scheme. Differing scheme lifetimes apply to different projects. These are stated in the recommendation sheets.

**Northam Hall:** Recommendation: NPC- 01. Install an electric radiant heating system for space heating in combination with point of use electric water heaters once the existing boiler fails. There should be little difference in the cost of this intervention compared to installing a new boiler.

Capital Cost £	Carbon Saving CO <sub>2</sub> e p.a.	tCO <sub>2</sub> e saved over lifetime	Timeframe
0	See detail in NPC-01 sheet	See NPC-01 sheet	Commence from 2025

**Maintenance vehicles:** Recommendation: NPC- 02. Replace pickup petrol vehicle WA61 KBF with a battery electric vehicle. Review case for replacing other maintenance vehicles once equivalent electric vehicles come to market.

Capital Cost £	Carbon Saving kgCO <sub>2</sub> e p.a.	tCO <sub>2</sub> e saved over lifetime	Timeframe
6,400	381	5	From now.

**Grass cutting and machinery:** Recommendation: NPC-03. Replace the petrol blowers and hedge trimmers with electric alternatives. Purchase an electric mower for smaller tasks. This results in a saving in capital cost and carbon emissions.

Capital Cost £	Carbon Saving kgCO <sub>2</sub> e p.a.	tCO <sub>2</sub> e saved over lifetime	Timeframe
-3,763	311	2	As soon as possible.

**Northam Hall:** Recommendation: NPC- 04.

Option 1: Install solar photovoltaic panels on the SE facing roof of Northam hall delivering a 70% reduction in CO<sub>2</sub> emissions for an 11 year payback. It is understood that this has been considered before but not taken forward due to concerns regarding asbestos. However, this could be a key measure if it can be implemented.

Capital Cost £	Carbon Saving kgCO <sub>2</sub> e p.a.	tCO <sub>2</sub> e saved over lifetime	Timeframe
5,500	793	18	Investigate now

Option 2: Install a battery storage system in combination with the solar panels delivering an 85% reduction in CO<sub>2</sub> emissions for a 15 year payback. When combined with storage, this system could provide the required source of power for electric vehicle charging.

Capital Cost £	Carbon Saving kgCO <sub>2</sub> e p.a.	tCO <sub>2</sub> e saved over lifetime	Timeframe
10,500	973	22	Investigate now

**Northam Hall:** Recommendation: NPC-05. Complete the substitution of fluorescent lighting in Northam hall with LED tubes. Progress has been made in this area by substituting several tubes. We understand the strategy is to replace on failure. Installing the remaining 17 tubes in bulk would deliver a payback in under a year and provide uniformity of light levels.

Capital Cost £	Carbon Saving kgCO <sub>2</sub> e p.a.	tCO <sub>2</sub> e saved over lifetime	Timeframe
162	294	4	From now

### Additional unquantified recommendations

**Northam hall insulation.** Based on our survey of the building we expect that the radiators are undersized for the space and in winter will struggle to meet the target temperature. There are opportunities to improve the insulation for comfort and efficiency which will better retain heat. It is understood that the middle section of the ceiling is insulated with mineral wool, however this is not the case in the pitched section closest to the walls. The walls are solid and insulation could be introduced by through internal or external cladding. There are several aesthetically pleasing options available. More information is available at: <https://energysavingtrust.org.uk/home-insulation/solid-wall>

Energy 361 offers a thermal imaging survey service to pinpoint specific areas to target.

**Northam town hall.** Corridor electric heating timer. During our survey we observed that the electric heater closest to the main door included a timer that was not enabled so that there is at least the potential for this to be on 24 hours a day. As the building is operated Monday – Thursday 09:00 to 15:00 and Friday 09:00 to 13:00, this is potentially a source of wasted energy. We suggest this be reviewed and adjusted appropriately.

**Staff cars.** NPC has direct control over vehicles that travel between sites. Currently, the maintenance team uses the petrol vehicles. However, where appropriate (e.g. from the Town Hall to Northam Hall) it may be appropriate to use electric bikes instead. Electric bikes are now cost competitive with a good range at £1,500, with some in the £1,000 bracket. NPC should consider procuring a 'pool bike' for these purposes.

**Commuting.** Staff claims for mileage amounts to at least 3,700 kgCO<sub>2</sub>e. The council may be able to influence this by promoting cycling for example. If not already available, the council can offer a cycle to work scheme: <https://www.cyclescheme.co.uk/>.

**Awareness.** According to the 2019 Committee on Climate Change report: Net Zero The UK's contribution to stopping global-warming, 9% of the near zero goal will need to be met by societal or behavioural changes, with a further 53% of measures being comprised of combined low-carbon technologies and societal / behavioural changes. In conversation with staff, the cost or amount of energy consumed at Northam town hall was not known, just that it was paid for in the rent to Torridge District Council. The first step to involving your staff in reducing emissions is to make these figures visible. We suggest that at the very least carbon emission data for the building is shared to all employees of NPC.

Following on from this, a behavioural change campaign should be rolled out. There are numerous resources available including:

<https://www.carbontrust.com/resources/low-carbon-behaviour-change-the-ps300-million-opportunity>

<https://www.carbontrust.com/news-and-events/insights/five-tips-for-better-behaviour-change-campaigns-and-a-new-collaborative>

Simple measures include only boiling enough water for tea's, not opening windows when the heating is on, and switching computers and monitors off when leaving for the day.

Energy 361 operates a range of behavioural change advice initiatives for Councils.

### **Northam Parish Carbon Emissions**

A report of Northam's carbon footprint was produced by the University of Exeter Centre for Sustainable Energy in 2022. To read the results follow this link: <https://impact-tool.org.uk/report?regionId=E04012900&geography=parish>

To calculate your household carbon footprint follow this link: <https://calculator.carbonsavvy.uk/calculator/taster>

Using the online [IMPACT | Community carbon calculator](#), the Council has derived the report reproduced on the following pages.

Impact is a digital visualisation tool that helps community's understand their carbon footprint from the Centre for Sustainable Energy<sup>1</sup>. It draws on meta data and works for parishes, wards and larger local authority areas.

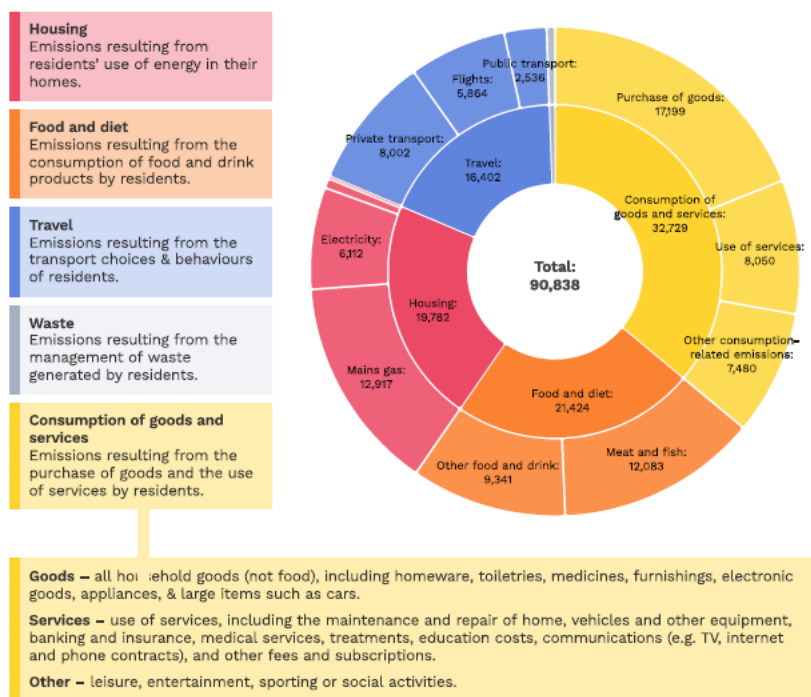
It helps identify the aspects where taking action to tackle climate change can make the biggest difference.

The website includes a useful [user guide](#).

Using the tool, the Council has found Northam Town area's carbon footprint can be analysed as follows:

### Your whole footprint

This figure shows the annual carbon emissions (measured in tonnes CO<sub>2</sub>e<sup>2</sup>) emitted as a result of the different activities that residents within your parish's boundary engage in – from heating to eating.



1: Derived from Carbon Footprint Report - Northam Parish - [www.impact-tool.org.uk](http://www.impact-tool.org.uk)

<sup>1</sup> Centre for Sustainable Energy | St James Court, St James Parade, Bristol BS1 3LH. Registered Charity 298740 [www.cse.org.uk](http://www.cse.org.uk)

## Appendix 2: Climate Survey and Results.

### Northam Town Council Climate Emergency Survey

Northam Town Council has declared a Climate Emergency in the recognition that carbon emissions from industry, transport, our homes and other sources will cause a disastrous increase in global temperatures unless drastic action is taken by us all.

Our aim is to reduce to zero the Council's carbon emissions in its buildings and activities by 2030 and to achieve a significant reduction in emissions in Northam parish by the same date. To help us do this we are inviting you in this survey to tell us what actions you are taking in the face of climate change and to give us your suggestions.

Are you male or female? M F Other

How old are you? 0-17 18-29 30-49 50-64 65+

How concerned are you about climate change? Please circle 1 2 3 4 5 (1 Not at all to 5 Very concerned)

What are the four top actions you would like us to take on climate? (Please circle actions you favour)

- a) Plant many more trees and hedges
- b) Initiate a community energy scheme to power more local homes e.g. by waste heat
- c) Install electric vehicle charging points e.g. at Northam Hall
- d) Provide bike racks e.g. at Northam Hall, Town Hall and the Council's open spaces
- e) Promote cycle/pedestrian routes e.g. Westward Ho! to Bideford along Kenwith Valley
- f) Increase areas for wildlife in the Council's open spaces and on road verges
- g) Develop forest gardens in parks to provide fruit and vegetables
- h) Initiate/encourage local food market
- i) Provide grants to local schools for carbon reduction projects
- j) Start a community composting scheme
- k) Place recycle bins in Council's open spaces and parks
- l) Initiate/encourage local food market



What actions would you take at home? (Please circle actions you favour)

- a) Switch to 100% renewable energy tariff for your fuel bills
- b) Use a timer, thermostat & heating controls to set heating & hot water
- c) Install renewable energy generation such as solar panels
- d) Install a smart meter so you know how much energy or water you use
- e) Step up insulation and draught-proof your home
- f) Grow your own fruit and vegetables
- g) Eat local, organic, seasonal produce
- h) Eat more plant-based foods



What actions would you take to reduce waste? (Please circle actions you favour)



- a) Reduce your purchases
- b) Buy from charity or reuse shops
- c) Repair, reuse or restyle items such as clothes
- d) Recycle everything possible e.g. food, batteries, textiles
- e) Cut down food waste
- f) Compost leftovers in compost bins

What actions do you or would you take when travelling? (Please circle actions you favour)

- a) Leave your car at home more often and travel by public transport, on foot or bike
- b) Switch to an electric or hybrid vehicle in the next five years
- c) Hire or buy a bike
- d) Take fewer flights.
- e) Take with you reusable containers, shopping bags, water bottle and coffee cup
- f) Avoid single-use plastics and plastic packaging



What actions would you take to increase wildlife? (Please circle actions you favour)

- a) Set aside space in your garden or balcony for wildlife
- b) Garden organically using natural pest and weed controls
- c) Keep your garden green e.g. avoid installing a patio/decking and artificial grass
- d) Join a volunteer group or wildlife organisation to conserve and increase wildlife
- e) Leave an opening in garden fence as a wildlife corridor
- f) Create a pond and bug hotel



Which of the following would you like to learn more about? (Please ring the actions you favour)

- a) Switching to renewable energy tariff
- b) Insulating your home
- c) Joining a car-share club
- d) Repairing your clothes
- e) Choosing environmentally-friendly products
- f) Finding out your local bus route and times
- g) Cooking healthy, sustainable food on a budget
- h) Cycling safely
- i) Making your garden more wildlife friendly
- j) Growing your own food
- k) Arts & crafts with recycled materials



Do you have any other comments or suggestions for responding to the climate emergency? (Please use separate sheet if necessary)

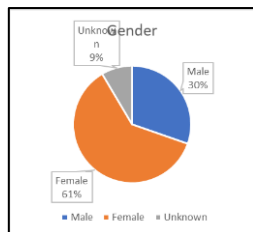
Thank you for responding. So we can ensure you live in the parish please include your details below. They will only be used for the purposes of this survey and in accordance with our Privacy Notice. They will not be used in any other capacity by Northam Town Council or shared with other parties. Permission can be withdrawn at any time by contacting the Council.

Name

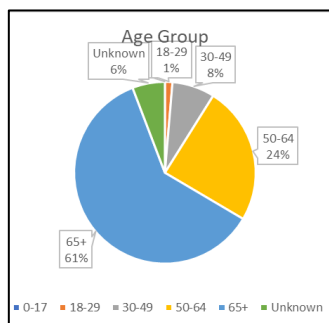
Email address

Home address

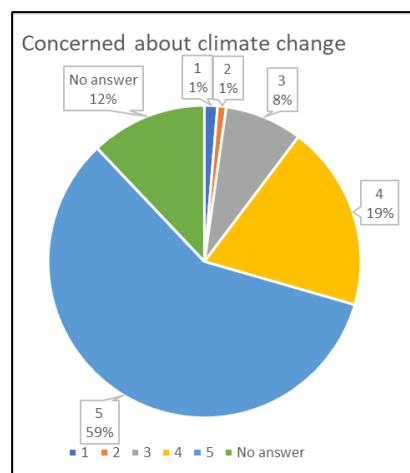
Are you male or female?	
Male	68
Female	137
Unknown	19
Total	224



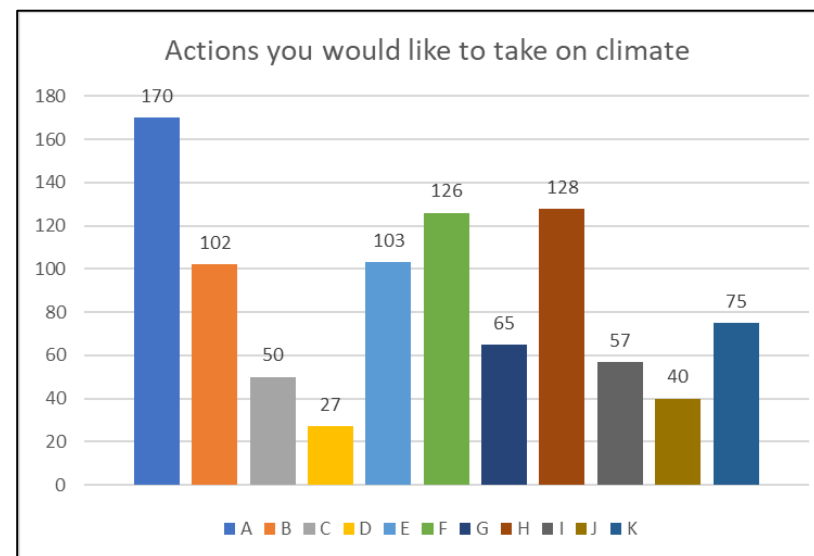
How old are you?	
0-17	0
18-29	3
30-49	17
50-64	55
65+	136
Unknown	13
Total	224



How Concerned are you about climate change? (1 = not at all concerned   5 = very concerned)	
1	3
2	2
3	18
4	43
5	131
No answer	27
Total	224

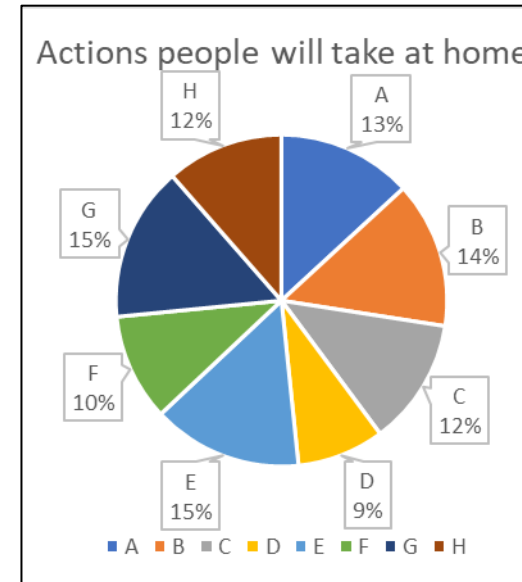


What are the four top actions you would like us to take on climate?		
A	170	Plant more trees and hedges
B	102	Initiate a community energy scheme to power more local homes by waste heat
C	50	Install electric vehicle points e.g. at Northam Hall
D	27	Provide bike racks e.g. Northam Hall, Town Hall and the Council's open spaces.
E	103	Promote cycle/pedestrian routes
F	126	Increase area's of wildlife in the Council's open spaces and on road verges.
G	65	Develop forest gardens in parks to provide fruit and vegetables
H	128	Initiate /encourage local food markets
I	57	Provide grants to local schools for carbon reduction projects
J	40	Start a community composting scheme
K	75	Place recycle bins in council open spaces and parks
Total	943	

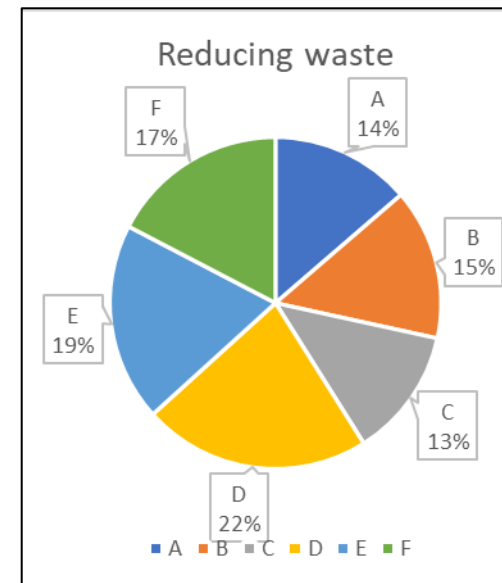




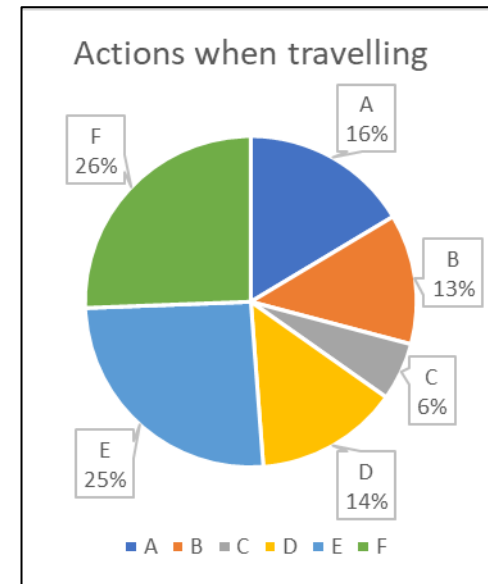
What actions would you take at home		
A	116	Switch to 100% renewable energy tariff for your fuel bills
B	126	Use a timer, thermostat & heating controls to set heating and hot water
C	109	Install renewable energy generation such as solar panels
D	75	Install a smart meter so you know how much energy or water you use
E	129	Step up insulation and draught-proof your home
F	92	Grow your own fruit and vegetables
G	133	Eat local, seasonal, organic produce
H	101	Eat more plant based foods
Total	881	



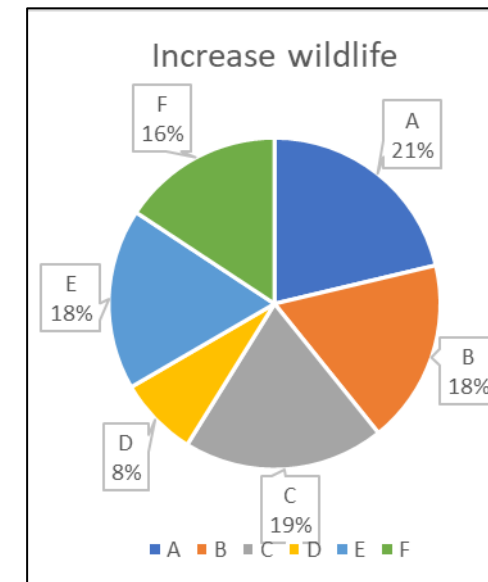
What actions would you take to reduce waste		
A	104	Reduce your purchases
B	112	Buy from charity or reuse shops
C	96	Repair, reuse or restyle items such as clothes
D	169	Recycle everything possible e.g. food, batteries, textiles
E	147	Cut down food waste
F	132	Compost leftovers in compost bins
Total	760	



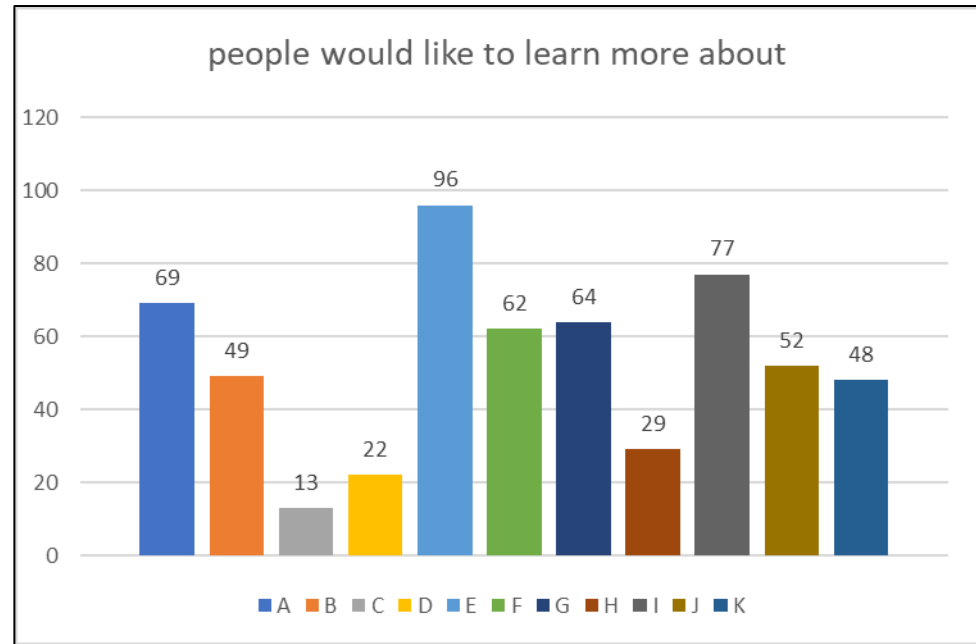
What actions do you or would you take when travelling?		
A	116	Travel by public transport, on foot or bike
B	90	Switch to electric or hybrid vehicle in the next five years
C	40	Hire or buy a bike
D	99	Take fewer flights
E	181	Take with you reusable containers, shopping bags, water bottle and coffee cup
F	181	Avoid single use plastics and plastic packaging
Total	707	



What actions would you take to increase wildlife?		
A	153	Set aside space in your garden or balcony for wildlife
B	129	Garden organically using natural pest and weed free controls
C	141	Keep your garden green e.g. avoid installing decking or artificial grass
D	56	Join a wildlife conservation group or organisation
E	127	Leave an opening in garden fence as a wildlife corridor
F	113	Create a pond and bug hotel
Total	719	



Which of the follow would you like to learn more about?		
A	69	Switch to renewable energy
B	49	Insulating your home
C	13	Joining a car share club
D	22	Repairing your clothes
E	96	Choosing environmentally friendly products
F	62	Finding out your local bus route and times
G	64	Cooking healthy, sustainable food on a budget
H	29	Cycling safely
I	77	Making your garden more wildlife friendly
J	52	Growing your own food
K	48	Arts and crafts with recycled materials
Total	581	



### Appendix 3: Resources and Sources

Northam Town Council and Torrridge District Council are tying in with the climate action plan of **Devon County Council**. More information can be found on <https://www.devon.gov.uk/energyandclimatechange/strategy/climate-change-strategy>

<https://www.climateemergency.uk/> has many resources including a full list of councils which have declared a Climate Emergency and their targets and motions, some plans, and a Basecamp site for discussion, and sharing resources.

**Community Energy England** is a not for profit organisation that represents and supports those committed to the community energy sector. Contact [info@communityenergyengland.org](mailto:info@communityenergyengland.org).

**Extinction Rebellion** has produced an excellent briefing to make sure that Declarations are meaningful and have teeth. It has sections on energy as well as housing.

**Friends of the Earth** has a climate action plan for local authorities as part of its Climate Action Groups campaign to mobilise local volunteers around the Climate Emergency planning.

**The Centre for Sustainable Energy** has launched a Climate Emergency Support Programme for local authorities. It is focussing especially on the challenges in two-tier authorities. It is encouraging District Councils to connect with their Town and Parish Council and resourcing those to declare Climate Emergencies and engage their very local communities in solutions that will help the District Council meet their targets.

**Green Alliance** will be working with three different city councils, to enable the planning process and then to share good practice.

Councillors and council officers can apply to join the **Local Government Association (LGA)** Special Interest group, the Climate Emergency Network, to support Local Authorities in declaring a Climate Emergency and in preparing and implementing plans to achieve carbon neutral status as quickly as possible

**Local Energy Hubs** have been set up by BEIS to support local energy initiatives. 'Local energy' refers to all energy projects that are led by local organisations (public, private, third sector) for local benefit. All aspects of collective action to reduce, purchase, manage and generate energy are included within 'local energy.' This includes but goes beyond community energy.

**Transition Town** initiatives have been working on this agenda for many years. Find your local one at <https://transitionnetwork.org/transition-near-me/>

There are many places in the UK where strong action is being taken to reduce carbon emissions. For example, **Leeds** has a bold plan which can be found on <https://news.leeds.gov.uk/council-approves-plan-to-more-than-halve-carbon-emissions-by-2025/> and a website <https://www.leedsbyexample.co.uk/>

Campaigning locally against single-use plastic is Plastic Free Torrridge on <https://www.facebook.com/plasticfreetorridge/>.

**361 Energy** is based in North Devon and helps to reduce emissions, providing practical advice. Contact on [info@361energy.org](mailto:info@361energy.org).



Lords of the Manor



The local Council for Appledore, Northam, Orchard Hill and Westward Ho!  
Twinned with Mondeville, France and Büddenstedt, Germany  
Office open: Monday to Friday mornings



Trustees of the Common Right